

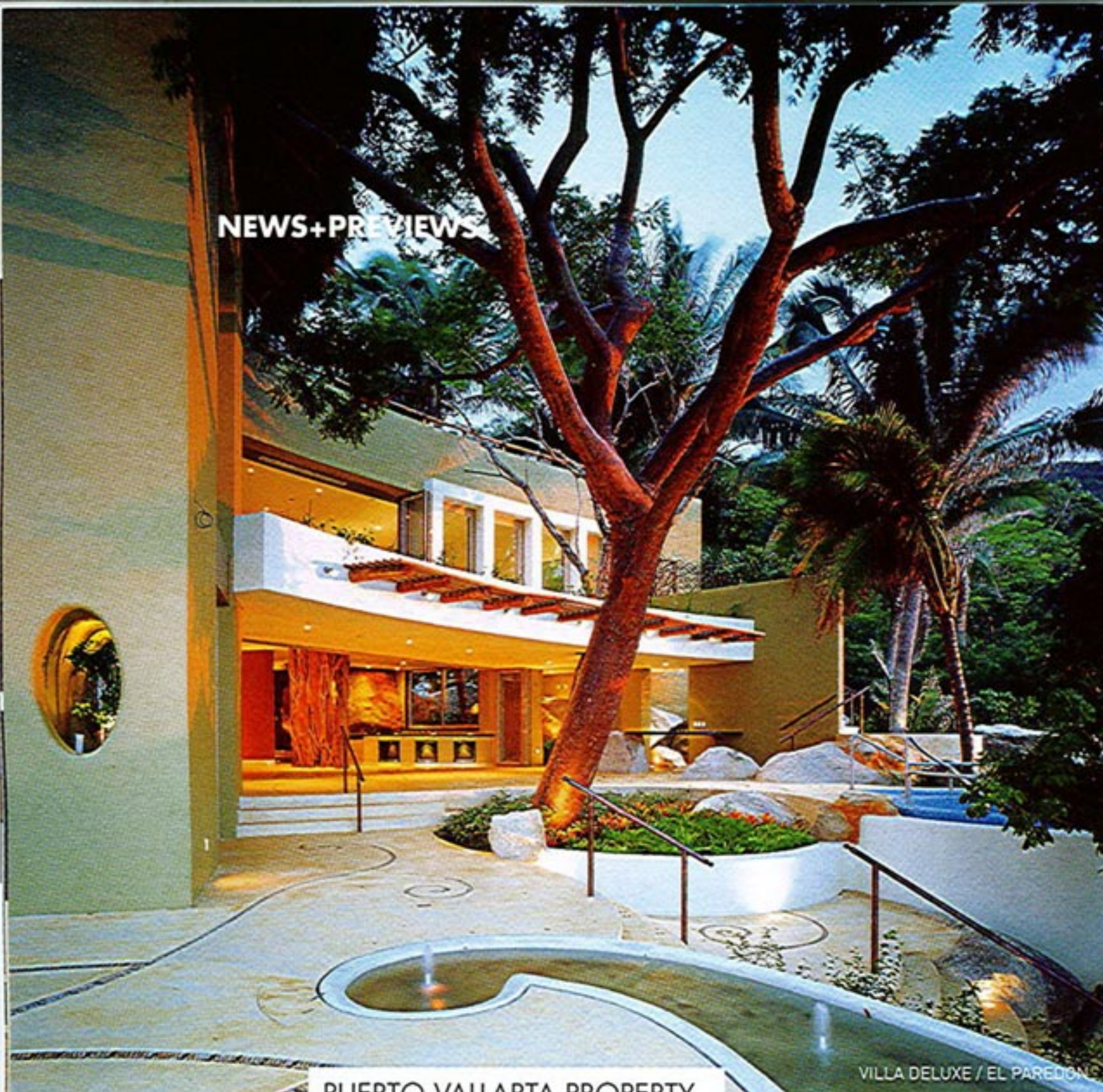
THE PRIVATE JET LIFESTYLE MAGAZINE

ELITE

T R A L L E R

MAY/JUNE 2008

THE
NEW
LONG
WEEKEND



PUERTO VALLARTA PROPERTY

Elite fans of Mexico's **Puerto Vallarta** resort area will soon have a new, unique residential option that not only puts them right on the legendary **Bahia de Banderas**, but also delivers the style of Guadalajara's premier **Elias+Elias AR** architects (of **Grand Velas** in Nuevo Vallarta fame), to boot. Located at the base of a cliff on the resort area's South Shore, two of the projected 10 estate homes (which will range from \$3 to \$15 million) at **El Paredon** are already built. All will offer a level of luxury never before seen in Puerto Vallarta that includes a private beach club among many other amenities.

Contact: Developers Ricardo and Roberto Elias,
Phone: 52-33-3648-6060; Email: info@elparedon.com.mx;
Website: elparedon.com.mx

KEYED IN

One Key, a new destination club operator, is mimicking the popular **Marquis Jet** membership card concept for private jet travel and applying it to the residence club industry. In addition to a portfolio of multi-million-dollar homes in more than 20 destinations (from Bermuda to Tuscany to the Oregon coast), professional on-site inspections to ensure residence quality and a single point of contact, One Key logs membership levels on an easy-to-use 15-, 25- or 45-night travel card. Prices are \$34,900, \$49,900 and \$84,900, respectively, and members' prepaid time never expires.

Contact: VP Sales David Burg, Phone: (508) 337-0060; Fax: (508) 546-0450; Email: info@onekeyworld.com; Website: www.onekeyworld.com

AFRICAN HEIGHTS

At 19,340 feet, Tanzania's **Mt. Kilimanjaro** is the tallest free-standing mountain on earth. Because it's essentially a big hike, requiring no technical mountaineering skills, climbing it is on many travelers' "once-in-a-lifetime" lists. If you do go, you should go with **Micato Safaris**. Familiar to safari aficionados, Micato is regularly rated the world's finest outfitter. Partnering with a local family of Swiss mountain guides, the firm simply offers a new level of service to trekkers on Kilimanjaro. Hikers carry nothing but a camera, the best campsites are reserved and ready (with surprisingly comfortable bathrooms) and chef-prepared meals with wine await your team. With five staffers per climber, all you really have to do is walk. After exploring the high country, opt for a post-climb safari so you don't miss the flora and fauna of the savannah. The Kilimanjaro trek is a six-night option, from \$3,950 per person, paired with Micato's bespoke safari program.

Contact: Program Director Diana Meehan,

Phone: (212) 545-7111; Fax: (212) 545-8927;

Email: dmeehan@micato.com; Website: www.micato.com

SNOWS OF KILIMANJARO / MICATO SAFARIS



BEAVER CREEK'S BEST

The celebrity-favored private **Trapper's Cabin** in elite ski resort **Beaver Creek**, Colorado, has just undergone an extensive renovation, making its classic "ski lodge vibe" even more appealing to high-end skiers and mountain fanatics. Located at the top of Beaver Creek Mountain, at 9,500 feet, this exclusive accommodation sleeps 10 and comes with its own private chef and housekeeping staff. The epitome of ski-in/ski-out elegance during the winter season (\$3,000 a night in peak season), the cabin is also an ideal Rocky Mountain high base for summer excursions into the area's rich natural beauty (\$549 a night starting in July). A new kitchen, gorgeous outdoor decking with a hot tub, steam showers and new entertainment technology highlight the improvements to the retreat.

Contact: Sales Manager Jamie Fisher, Phone: (970) 754-5788;

Email: jfisher@vailresorts.com; Website: www.trapperscabincolorado.com